

mini2

Most Accurate Compact OTDR

- SOLA (Smart Optical Link Analyzer)
- 5" Touch Screen with Smart GUI
- 8GB Internal Storage
- Built-In VFL and Light Source
- Lightweight and Handheld



CHARACTERISTICS



Measure Fiber Optical Link



Simplify the Test Process



5" Touch Screen
Smart GUI
High Brightness
Resolution of 800x480



Identify Fiber Fault Location



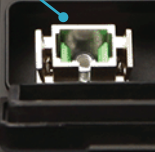
Magnify the Fiber End Face




Effective Tool for Managing Test Result Files




Optical Connector




VFL




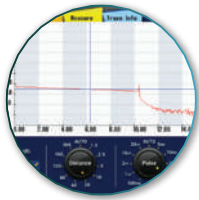
DC



USB







OTDR

OTDR-mode enables you to measure distance, loss, reflectance, attenuation, ORL and sum on an optical fiber. When operating Auto-mode, test is automatically done without additional setting. The test results can be stored in 3 types of format (image, SOR, PDF).



SOLA

SOLA (Smart Optical Link Analyzer), an application that simplifies the measure process, shows you an accurate test results by utilizing advanced algorithm and optimal multiple pulse width. You don't have to set complicated parameters, which means even unskilled workers can make measurement with great ease.



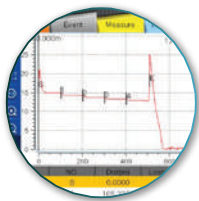
VFL

VFL (Visual Fault Locator) visually identifies the location of bending point, faulty connector or splicing point by emitting a bright red laser (it can reach a maximum of 10km), and this is a must function that workers need on the field.



FIBER INSPECTION

Testing fiber end face on connectors with FIBER MICROSCOPE is very important, because a polluted or damaged connector can cause critical damage to test results as well as testing port.



FILE MANAGER

File Manager can provide powerful file management that users can manage their files conveniently



LIGHT SOURCE

Invisible light source (1310/1550/1625nm live port) can provide the following sources of light: CW, 1kHz, 2kHz modulated and 1kHz & 2kHz blink.

ORDERING INFORMATION

MODEL

OTDR: MINI2

OPTICAL CONFIGURATION

SMF1: 32/30dB (1310/1550nm)

SMF2: 30dB (1625nm Live)

BASIC SOFTWARE

OTDR: OTDR application only

OS: OTDR & SOLA application

FIBER CONNECTOR

CNT1: FC/APC CNT4: FC/UPC CNT7: ST/UPC

CNT2: SC/APC CNT5: SC/UPC

CNT3: LC/APC CNT6: LC/UPC

LIGHT SOURCE

LS0: without VFL & Light Source

LS1: with VFL

LS2: with Light Source

LS3: with VFL & Light Source

MICRO SCOPE

MS0: without Micro Scope

MS1: with Micro Scope - V20

HARD CASE

HC0: without Hard Case

HC1: with Hard Case

XXX - XXX - XXX - XXX - XXX - XXX - XXX

DESCRIPTION

The MINI2 OTDR is used in the installation and maintenance of fiber optic cables. Features of the MINI2 OTDR include high precision test capabilities, fast response times, and easy to learn operation. The multi-point capacitive touch screen allows for user-friendly operation. The MINI2 OTDR offers accurate and fast test results and creates a report automatically. The MINI2 OTDR's compact design, delivers a lightweight, truly hand-held device.

TECHNICAL SPECIFICATIONS

Items	Specifications
Model	mini2
Display	5 inches, High Brightness TFT LCD, resolution of 800×480
Distance Unit	m /km / mile / ft
Dynamic Range	SMF1 : 32/30dB (1310/1550nm) / SMF2 : 30dB (1625nm Live)
Range settings	km: 1.3, 2.5, 5, 10, 20, 40, 80, 120, 160, 260 mile: 0.81, 1.55, 3.11, 6.22, 12.4, 24.8, 49.6, 74.6, 99.4, 161.5
Pulse width	5ns, 10ns, 20ns, 50ns, 100ns, 200ns, 500ns, 1μs, 2μs, 10μs, 20μs
Dead zone (Event/Attn./PON)	1m / 5m / 50m
Distance accuracy	± (1m + Distance × 2.5 × 10 ⁻⁵ + Sampling resolution)
Linearity	0.03dB
Sampling points	110,000 points
Refractive index	1.000000 - 2.000000 (step: 0.000001)
Splitting ratio	Up to 1:32 splitter
Resolution	0.04m ~ 10.24m
Loss readout resolution	0.001dB
Battery capacity	Operating Time : Up to 12hours
File format	SOR, BMP, JPG, GDM, SOLA, PDF
External connection	USB 2.0
Compatible connector	APC (FC, SC, LC), UPC (FC, SC, LC, ST)
Power supply	AC Input 100-240V, 50-60Hz / DC Input 19V, 3.42A
VFL	Port: 2.5mm ferrule type
	Wavelength: 650m ± 10 nm
	Distance: Up to 15km
Light Source	Output power: 20mW
	Operating wavelength: 1310nm / 1550nm ±10nm
Light Source Output Power	-8dBm
Dimension	115 x 173 x 64 mm (excluding rubber bumper)
Weight	0.90kg (with battery)

WEIGHT AND DIMENSIONS



ENVIRONMENTAL CONDITION

Items	Specifications
Operating Conditions	Humidity: 0 to 95%, noncondensing Temperature: -10 to 50°C
Storage Conditions	Humidity: 0 to 95%, noncondensing Temperature: -20 to 60°C

PACKAGE

Model/Part No.	Description
Power Cable/AC Adapter	ACC-25 / JS-180300 1ea
Carrying Case	Soft Case 1ea
Shoulder Strap/Touch pen	1ea
Calibration Certificate	1ea

INNO Instrument does not accept responsibility for damages arising from misuse of the product.

The Information on this catalog is subject to change without prior notice.



Copyright © 2023 INNO Instrument Inc. All rights reserved.

INNO Instrument Inc.
support@innoinstrument.com

Homepage
www.INNOinstrument.com
Please visit us on Facebook
www.facebook.com/INNOinstrument